

Pages 1-10

Review



The No 1 Ladies' Opera House **PAGES 8, 9**

Pages 11-20

The Critics



Leonard Cohen, genius in a fedora **PAGES 16, 17**

Pages 21-27

Health



On your bike ... the fast lane to fitness **PAGES 24, 25**

Pages 29-46

Travel



Tarrant holidays like a billionaire **PAGES 32, 33**

Pages 47-57

Property



Lynne Franks sells her Ab Fab home **PAGES 47-49**

Pages 60-63

Brain Workout

Four pages of mind exercising puzzles, sudokus and quizzes

The Mail



ON SUNDAY

2

June 22, 2008



Bawdy and bohemian, Sienna Miller's portrayal of Dylan Thomas's wife has been widely praised. But for **NICHOLAS MONSON**, Caitlin was one of the family – and a dark presence who haunted his life ...

Caitlin punched my grandmother in the face ... she wanted to get at the drinks

EVIL EYE: Sienna Miller as Caitlin in new film *The Edge Of Love*. Above: The real Caitlin with Dylan Thomas in 1936

The big winners in



MoS British Home Awards showcase top talent ... and even the Minister is impressed



INSPIRED: Housing Minister Caroline Flint at Friday's awards

These are the winners in this year's British Home Awards, a showcase for the most innovative architects and builders in Britain and Ireland.

The winners were announced at a dinner on Friday, attended by Housing Minister Caroline Flint, as well as the UK's leading architects and the MDs of the largest house-building companies.

'I'm delighted that The Mail on Sunday is continuing to showcase the best in British talent,' the Minister said.

In May, Ms Flint opened Barratt's Green House, last year's winner of the Home of the Future category,

a house with impeccable eco credentials, designed by Gaunt Francis Architects.

'It opened my eyes to how it is possible to live in a greener way and at the same time reduce the cost of running your home,' she said.

'This year's awards have challenged entrants still further - not only in how to be greener, but also how homes can be developed flexibly enough to continue meeting our needs as we get older. After all, many people continue to live in the same home for a number of years.'

'And while we face challenges in the housing market, it is vitally important we maintain our position, nationally and internationally, as a world leader in sustainable design.'

HOUSING PROJECT

Great West Quarter, Brentford

Architect: Assael Architecture
Homebuilder: Barratt West London
Barratt and Assael Architecture started with a 12.9-acre site along the former Golden Mile, the Great West Road. Grade II listed Wallis House is being carefully restored and converted into grand apartments. A 25-storey tower forms a fresh landmark for the site, accompanied by new buildings around a central piazza. Two converted buildings and 17 new ones will create 425 private and 348 affordable apartments.



SMALL HOUSE

eEscape, Eden Village

Architect: PCKO
Homebuilder: Barratt Kent
This design was created for a competition promoted by David Wilson Homes, in association with Design for Homes and Wood for Good, to explore innovation in family house design. PCKO Architects won the competition and seven three-bedroom eEscape townhouses have been built at Barratt Kent's Eden Village in Sittingbourne.

LARGE HOUSE

Hillside House, Rushden



Architect: Jeremy King Architects
In a conservation area within the village of Rushden, Northamptonshire, Hillside House is extremely respectful of its setting. The house establishes its modernity with white render and asymmetrical windows, while being sympathetic to local agricultural and domestic heritage with its timber cladding and tiled roof. Its dormer windows, bay and chimney repeat local features.

MIXED-USE REGENERATION

Quartermile, Edinburgh



Architect: Foster + Partners
Homebuilder: Gladedale Projects
Developer Gladedale Projects engaged top architectural talent to masterplan a mixed-use scheme for Edinburgh's most prominent site: the sprawling former Royal Infirmary. Foster + Partners' masterplan for the site displays a big vision. This city quarter will have more than 900 apartments in new and existing period buildings, more than 30,000sqm of new office space, in excess of 10,000sqm of retail and leisure space, plus seven acres of landscaping.

ARCHITECT

Assael Architecture



Assael Architecture has picked up a string of wins and commendations in the British Homes Awards and is a thoroughly deserving winner in this category.

The company, founded by John Assael, left, has received its recognition here for many exciting and thoughtful designs for projects across London. They include an elegant apartment scheme around a listed Art Deco cinema in Battersea, transforming a Brentford factory site and wrapping a varied contemporary street scene around a Georgian terrace at Tachbrook Triangle in Vauxhall. The practice's revenues rose by 725 per cent last year.

HOMEBUILDER

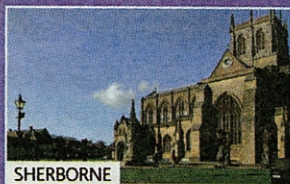
Barratt Homes

Big is not always best, but Barratt was this year's clear homebuilder winner. The scheme highlighted in these awards shows Barratt's consistent ability to deliver top-quality architecture, sustainable communities,

mixed-use and refurbishment of listed buildings. For its designs, CABE has recognised Barratt as a company whose forward thinking and motivation has led to better buildings and public spaces.

Location...

Introducing the Archstone Leisure Years Collection - Specifically designed for the over 55's



SHERBORNE

The beautiful town of Sherborne is steeped in history and is a very sought after location in North Dorset, nestling in green valleys and wooded hills.

- Two and three bed cottages
- Close to Sherborne Town Centre

Prices from £425,000



MERE

Mere has a lovely range of shops including individual restaurants, florist and greengrocer, traditional post office and village stores all set around a village centre, beautiful churches and large library complete the scene. 17 Miles from Salisbury.

- Two and three bed cottages
- Four apartments • Two conversions

Prices from £244,950

Location...



STALBRIDGE

The pretty village of Stalbridge is located in a region known as Blackmore Vale, close to the town of Sherborne and the Somerset border.

- 13 two and three bed cottages
- Courtyard style development
- Easy access to countryside

Prices from £299,950

Also introducing...

FLORENCE COURT, WILTON, SALISBURY



WILTON

- A stunning courtyard of 9 cottages & 8 apartments
- Only 1 Cottage and a selection of apartments remaining

Prices from £239,950

INFORMATION CENTRE

Open 7 days a week 10.30am to 5pm

01935 817 970

www.archstone.co.uk
or email: sales@archstone.co.uk



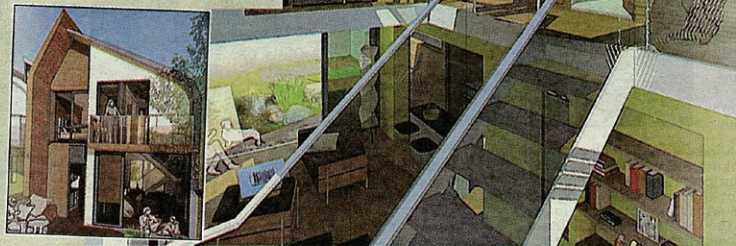
our home awards

TOMORROW'S LIFESTYLE HOME

THE READERS' CHOICE

The Avanti House

Architect: Avanti Architects
To be built by: Crest Nicholson
 Our winning entry – a carbon-neutral eco-home with adaptable internal spaces. Living areas are generous while service ones are economical. At the heart is an open chamber distributing light, air and energy into the interior. The flexi-room could be an office, garage or guest room. The home will be built at a Crest Nicholson site next year.



INNOVATION FOR BUILDING TECHNOLOGY

Lighthouse, BRE Innovation Park, Watford

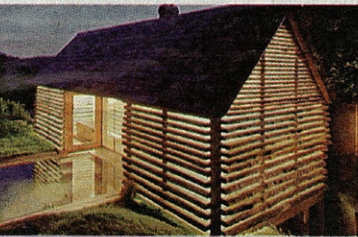
Architect: Sheppard Robson
Homebuilder: Kingspan
 Lighthouse is certainly an elegant and distinctive structure with its sweeping mono-pitched roof, simple barn-like form, timber cladding and brise-soleil. Architect Sheppard Robson worked with manufacturer Kingspan on this design concept, which has been constructed on BRE's Innovation Park in Hertfordshire to become the UK's first net zero-carbon house, complying with level 6 of the Code for Sustainable Homes, the standard to which all new homes must be built by 2016.



AFFORDABLE HOUSING

Joint Winners: Consort Road, Peckham

Architect: Walter Menteth
Homebuilder: Presentation Group
 Walter Menteth's scheme for the Presentation Group reinstates an older urban fabric, having a terrace of houses fronting a six-storey, angular L-shaped apartment block with ground-floor commercial space abutting a railway line. The cladding materials – white render and floor-to-ceiling glazing – visually unify the three different elements of the scheme and make a bold architectural statement that contrasts sharply with the time-worn and blackened brickwork of the adjacent railway viaduct.



ONE-OFF HOUSE

The Dairy House, Somerset

Architect: Skene Catling de la Pena
Homebuilder: Niall Hobhouse
 This architectural reworking has been created from a dairy on the historic Hadspen Estate. To effect the transformation, its aged lean-to sheds were removed and an extension added to create a family-size home with four to five bedrooms, three bathrooms, generous circulation space and well proportioned rooms.

APARTMENT BUILDING

Sir John Lyon House, London

Architect: Sidell Gibson
Homebuilder: Riverview Holdings
 The glazed terracotta tile facade of Sir John Lyon House is an adornment to the City. It was created in part from a run-down Fifties office block. There are mainly one-bedroom flats at lower levels, and higher up are apartments of up to 1,625 sq ft, with corner balconies cantilevering out vertiginously over the Thames.



INTERIOR DESIGN

Apartment 60, Aldersgate St, London

Architect: Mackay & Partners
 A ground-level space in the Barbican has been remodelled into a distinctive four-bedroom home, preserving the Barbican's raw brick and trademark concrete. Minimal interventions provide great effect. The new stairway with its integrated security and steel water feature forms an imposing entrance.



CONVERSION DEVELOPMENT

Avalon, Woolhampton

Architect: Broadway Malayan
Homebuilder: Bewley Homes
 Bewley Homes commissioned Broadway Malayan to design apartments in three halls at the redbrick former Douai School, a Grade II listed building beside Douai Abbey. Dating from 1830, with original features such as stone corbels, dark wood ceilings and tall leaded-glass windows, each hall has been converted to create 33 single apartments.



DEVELOPMENT

Chimney Pot Park, Salford

Architect: Shed KM
Homebuilder: Urban Splash
 Shed KM was charged with combining the best aspects of Victorian terrace housing with the 21st Century features people want. Its answer was to move the living space to the first floor and bedrooms to the ground floor. To the rear, a first-floor level, terraced garden conceals a carport-style parking space below.



RETIREMENT DEVELOPMENT

Stuart Court, Minchinhampton

Architect: Sidell Gibson
Homebuilder: English Courtyard
 Specialist retirement developer English Courtyard bought this late Victorian Cotswold rectory and has added purpose-designed cottages and flats to the site to form a very special 26-home community. The rectory has been restored and converted into four homes suitable for the needs of the retired. At right angles sits a row of four new stone-built cottages. The courtyard-style design, influenced by the medieval English almshouse, has long been at the heart of English Courtyard's approach.



HOLIDAY HOMES BY THE SEA

FROM **£10,995***
OWN FROM UNDER
£184 a month
15.1% APR
 FINANCE TYPICAL

Right now you can take ownership of a beautiful caravan holiday home at a choice of coast or country locations. Affordable ownership packages start from just **£10,995** up to **£125,000** for our exclusive lodges.

Why not take advantage of our **£500 discount**, we've even included your 2008 site fees! Ask about our **low deposit, affordable finance schemes** (subject to status).

WE HAVE SO MUCH TO OFFER!

- Swimming Pools
- Entertainment
- Bars and Restaurants
- Kids' Clubs

Facilities may vary by park

Choose from Coast & Country Locations

- Devon • Dorset • Hants
- Sussex • Kent • Essex • Suffolk

CALL FREE NOW!
0800 138 0477
 www.ParkHolidaysUK.com/mos

Send to: Park Holidays UK, FREEPOST ANG2640, COLCHESTER, CO2 8BR

Name: _____ Telephone: _____

Address: _____

Post Code: _____ email: _____

Please indicate which region is of interest to you:

SUFFOLK KENT DORSET DEVON
 ESSEX SUSSEX HANTS MCS 22-608

PARK HOLIDAYS