



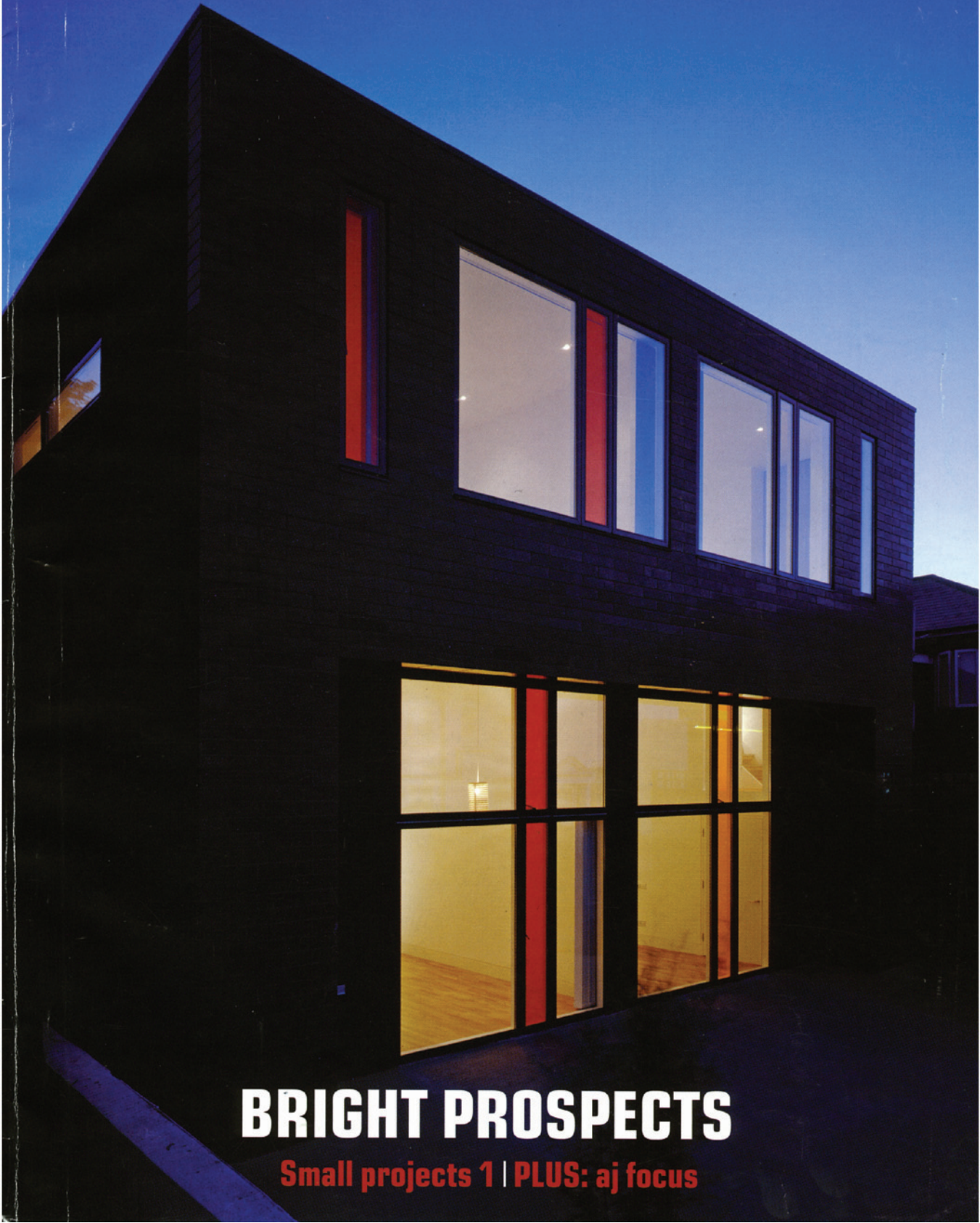
the architects' journal 20 | 01 | 05



9 770003 846097



0 4 >  
£3.95

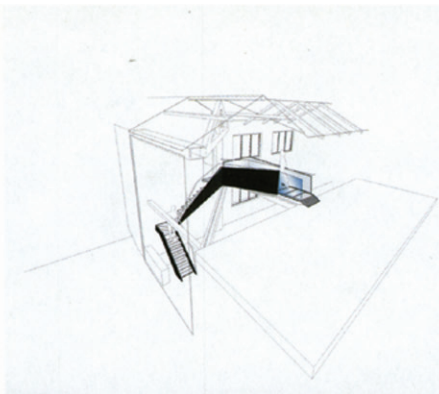


# BRIGHT PROSPECTS

Small projects 1 | PLUS: aj focus

**JEREMY  
KING ARCHITECTS**

[WWW.JEREMYKINGARCHITECTS.COM](http://WWW.JEREMYKINGARCHITECTS.COM)



#### BUCKLEY GRAY YEOMAN

*Photographs by Hufton + Crow*

Five Broadcasting (Channel 5) wanted to make an impact within its existing atrium. The aim was a bespoke sculptural stair/bridge appearing resolved in composition while juggling many inputs.

There three elements are cranked in plan, finding their way between offset openings. And in elevation the unit slopes between offset floor levels along its length. Its floor is steel-framed glass, printed with a pixel pattern which obscures/reveals the pedestrian from below.

The floor is encased from the atrium's side by an angular, mirror-polished steel panel. This mirror finish allows the stair, a potentially bulky object, to disappear when viewed from the cluttered atrium.

Contrasting with this ethereality, the third element, the opposite side, is a black acid-treated steel plate. This balustrade folds down forming the stringer, resolving the complex connection of bridge-bed and stair flights. Glass treads narrow then widen, turning 90° towards the atrium floor, floating by the side wall. The handrail is delicately angled in mirror-polished steel.

The structural engineer was Mike Hadi Associates; contractors Ronchetti (Milan) and Concept Interiors (London).

**Cost: £100,000**



#### JEREMY KING ARCHITECTS

*Photographs by Charlotte Wood*

The project is an extension to a Grade II-listed, half-timbered cottage in the centre of one of Hertfordshire's key rural conservation areas. Originally an enfilade of rooms, a timber and glass side corridor was added in the 1980s to provide separate access to each room.

The brief was to create a new kitchen/family room, utility room, entrance hall and downstairs cloakroom and to provide a new double garage. Visually, the extension is split into two areas. There is the 'barn' element, which contains the new kitchen and double garage, and a low 'link' section, housing the new large entrance hall, which connects to the existing house. The 'barn' is deliberately simple in form. Clad in western red cedar and iroko timber, it has been detailed to enable the subtle integration of large areas of glass into external walls while maintaining the horizontal continuity of the elevations. Within the kitchen, part of the glass wall opens up onto a new verandah with the garden beyond. The kitchen has also been given a double-height, conical ceiling.

By contrast, the 'link' is kept low as an important counterpoint to the presence of the original cottage, acknowledging the proportions of the latterly added glazed corridor.

The structural engineer was Greig Ling Consulting Engineers; contractor Rippingale Developments.

**Cost: £135,000**

20 January 2005

the architects' journal | 23